

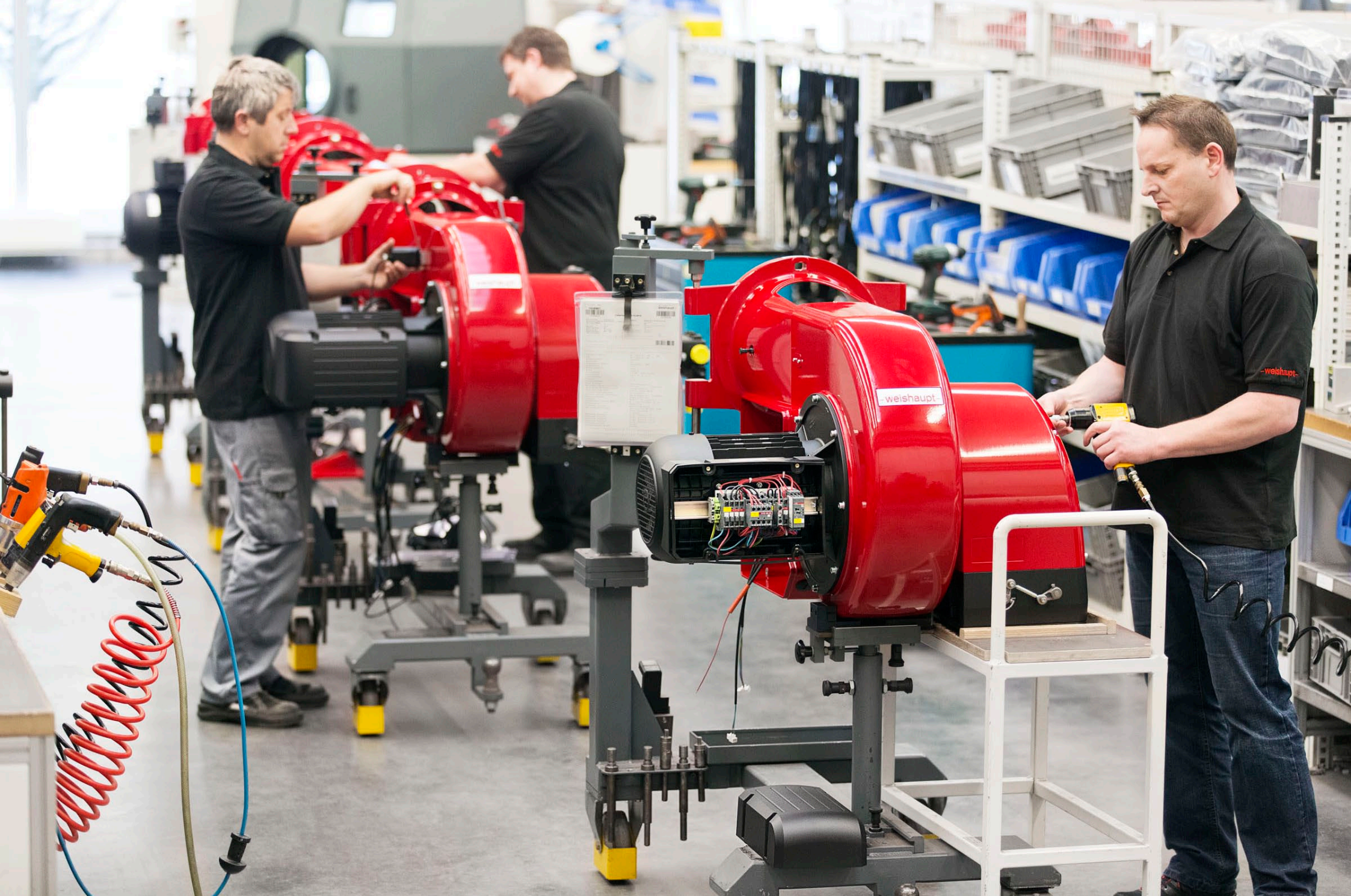


WEISHAUPT BILDERPORTFOLIO

DOMINIK OBERTREIS FOTOREPORTER AGENTUR LEONHARDT & KERN

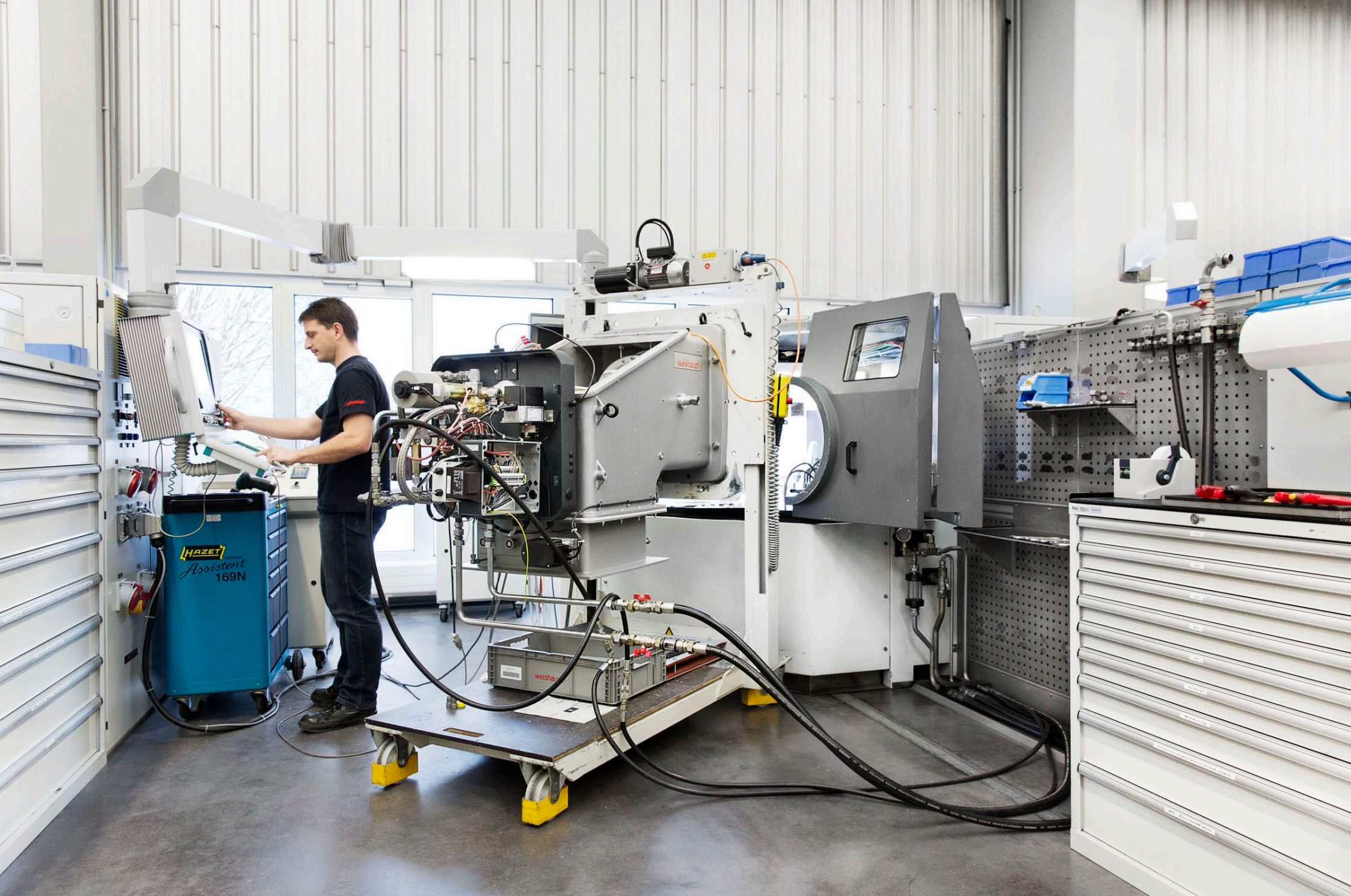






A close-up photograph of a bright red, glossy car body panel. A small, rectangular badge is affixed to the surface, featuring the brand name 'weishaupt' in a lowercase, sans-serif font. The text is flanked by short horizontal lines on both sides. The car's surface is highly reflective, showing clear highlights and shadows from the surrounding environment. In the background, a person is visible but out of focus, working on another part of the vehicle. The overall scene suggests a professional automotive workshop or assembly line.

-weishaupt-



weishaupt-
CE

Max Weishaupt GmbH, D-88475 Schwemmt, Germany

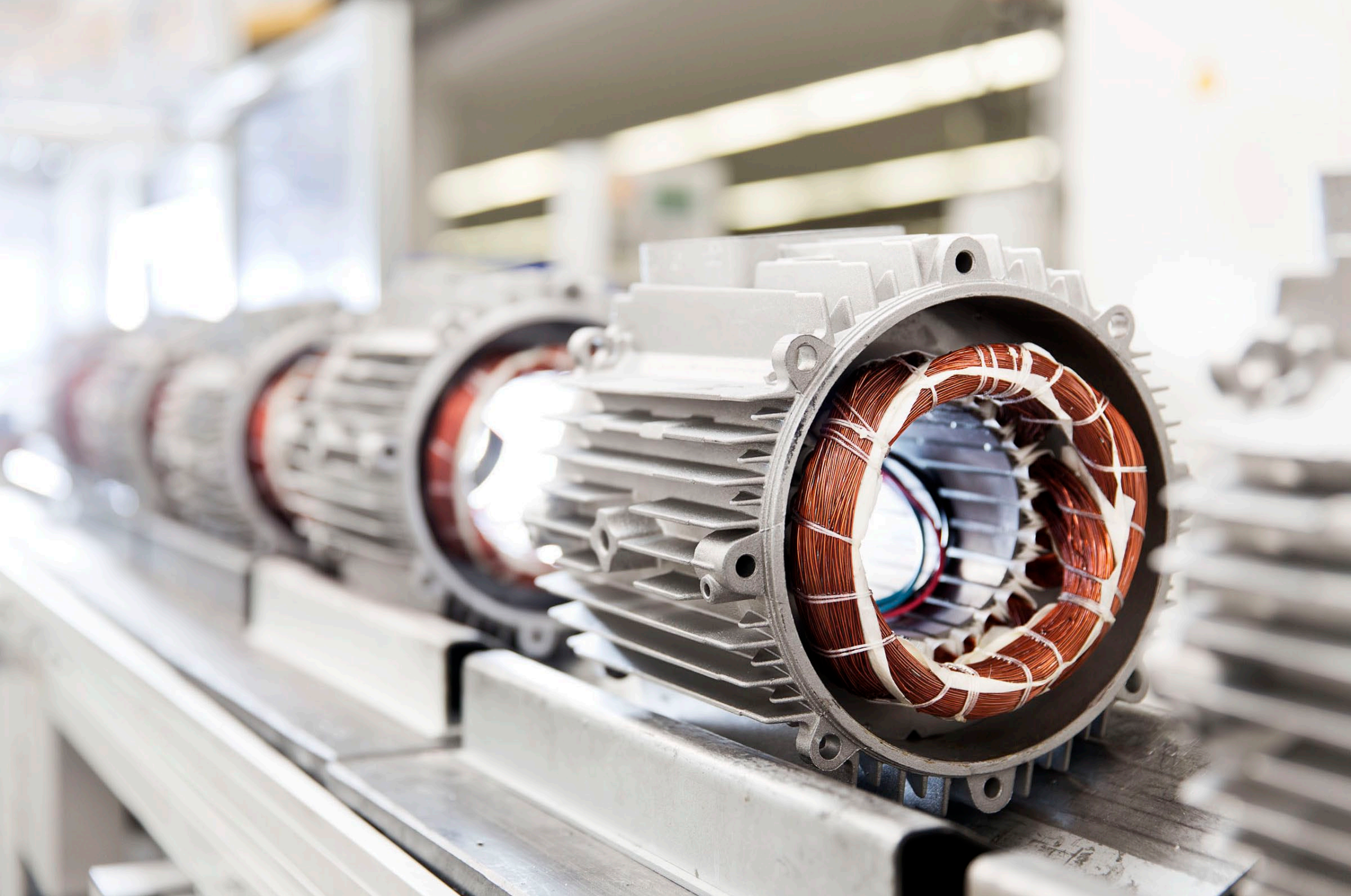
Горелка	WKGL70/2-A	Страна изготовления	100
Исполнение	ZM-1SF	Вид защиты	100
Фабр.№	40151610	Кат.	100
Год выпуска	2013	Вид газа	100
Мощн.	мин. 2500 макс. 12000		
Давл.подкл.	мин. 100 макс. 4000		
Ж/топливо EL	мин. 210 макс. 1012		
Управл.напр.	230 В, 1~, 50 Гц		
Напр.сети	400 В, 3~	N, PE	
Электр.мощн.	0,84 кВт		



A large, bold, red letter 'Q' is centered on a white rectangular sign. The 'Q' has a thick stroke and a small tail at the bottom right. The sign is mounted on a white metal frame in a factory or warehouse setting. In the background, there are long fluorescent light fixtures and rows of grey storage bins on shelves, all slightly out of focus.

Q

Qualität







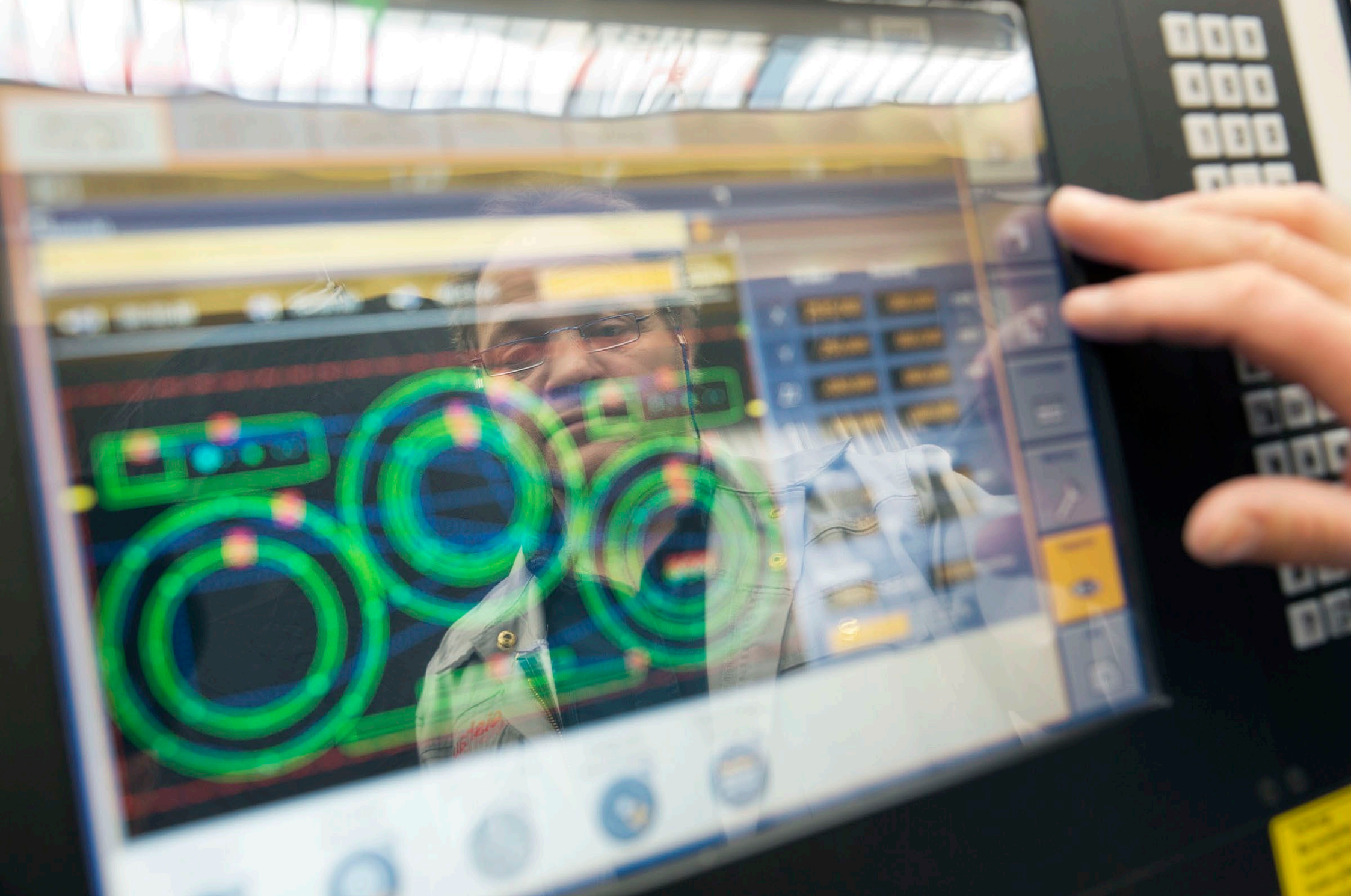


-weishaupt-



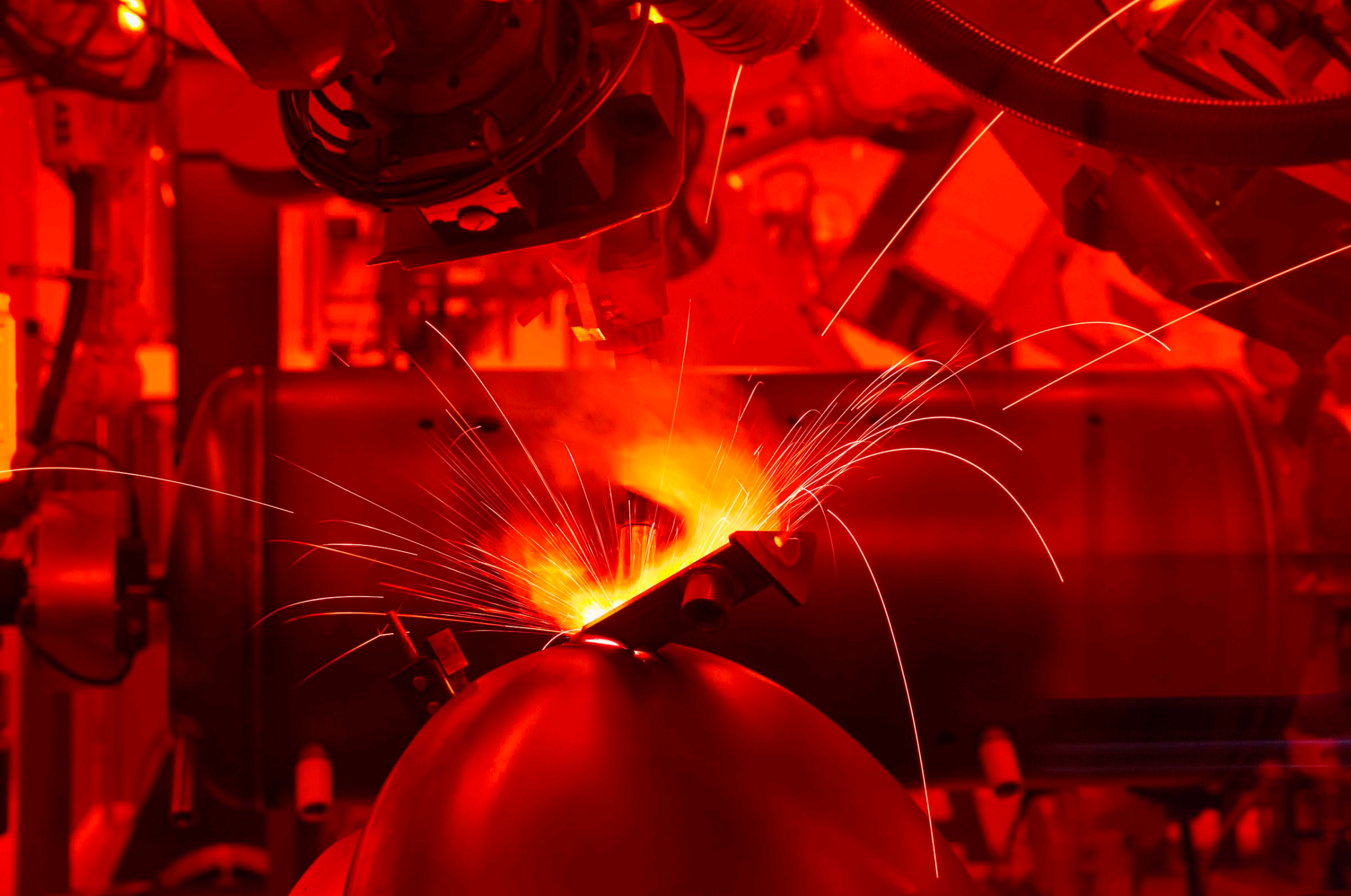


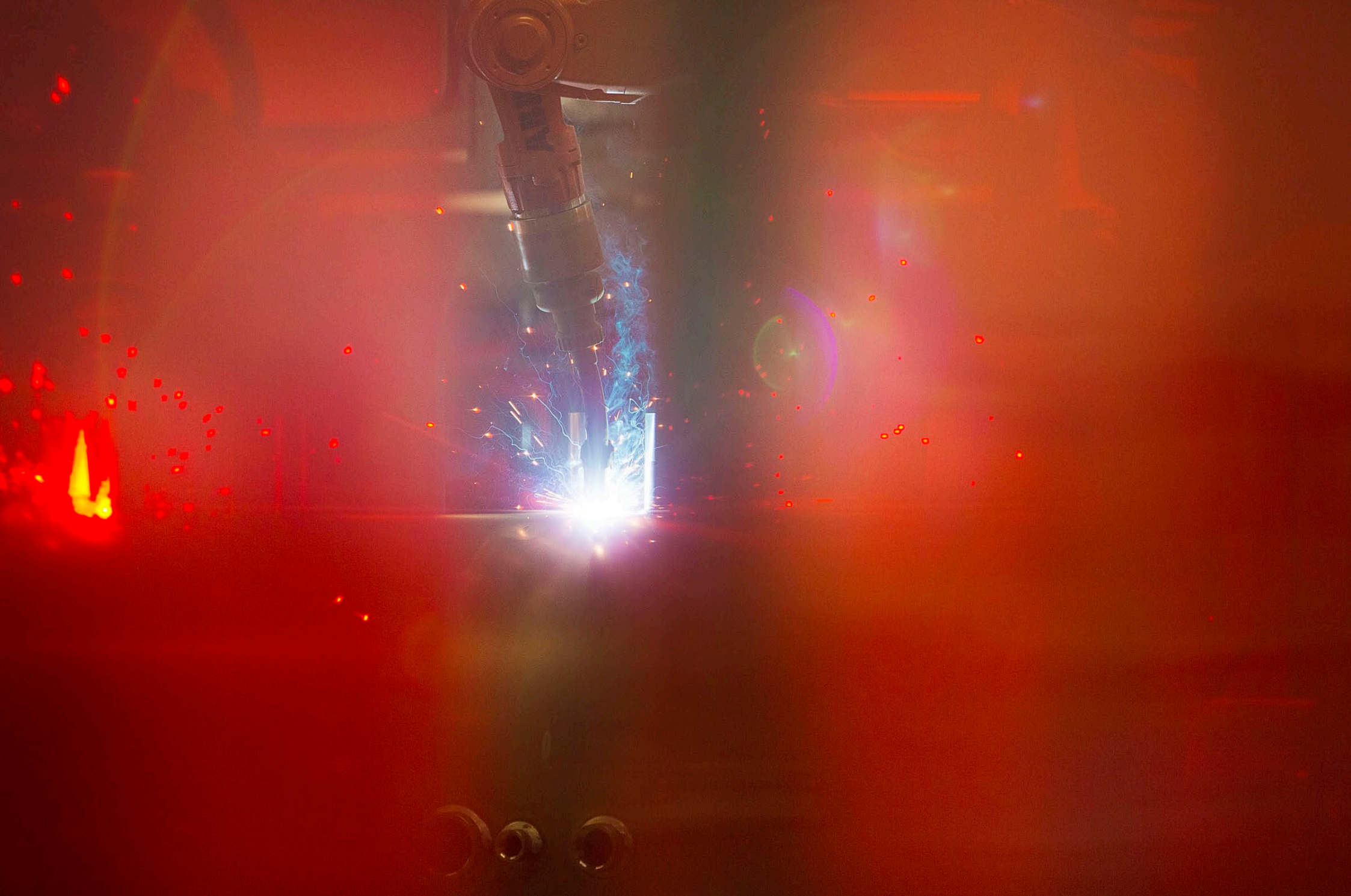












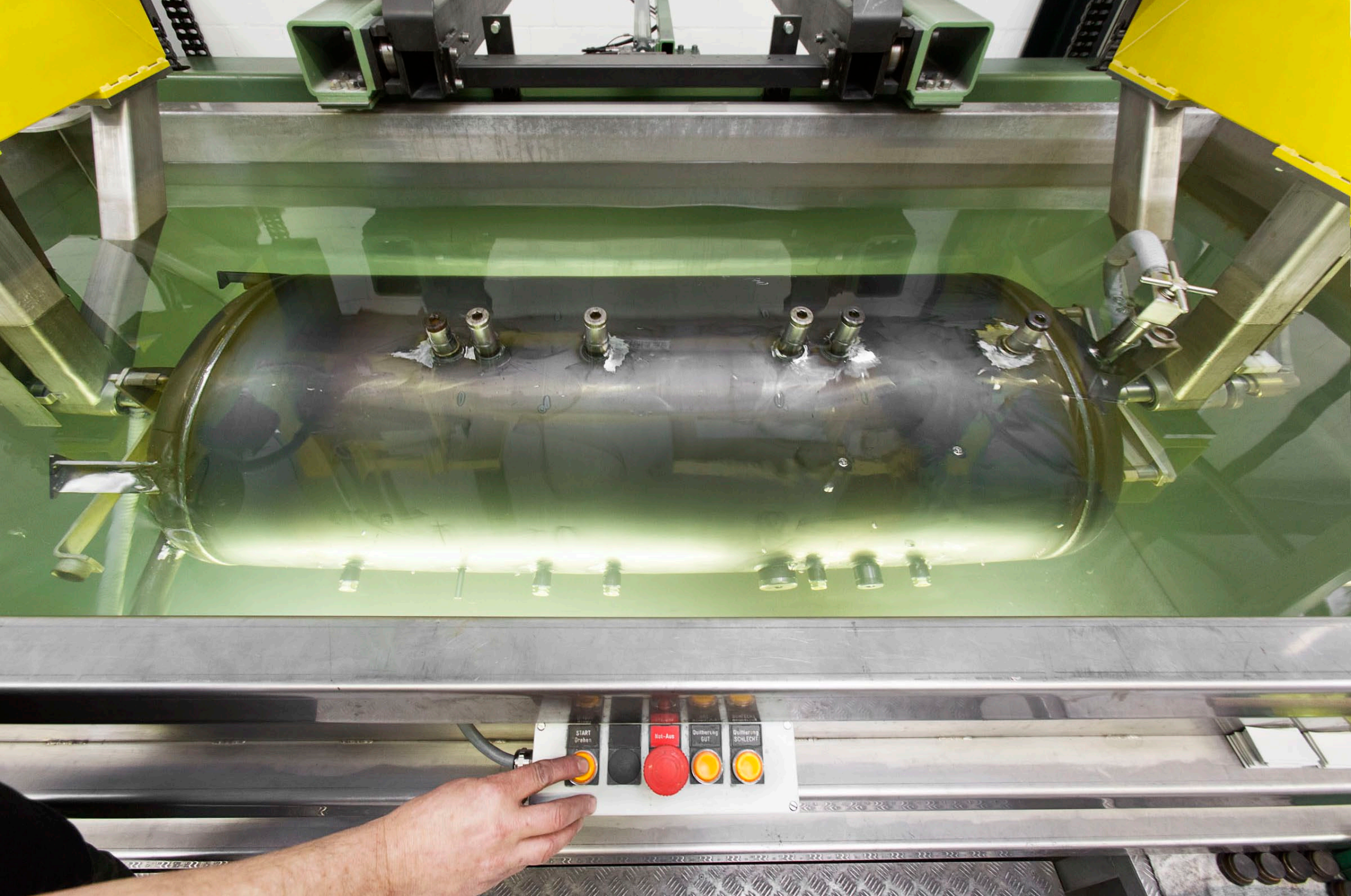






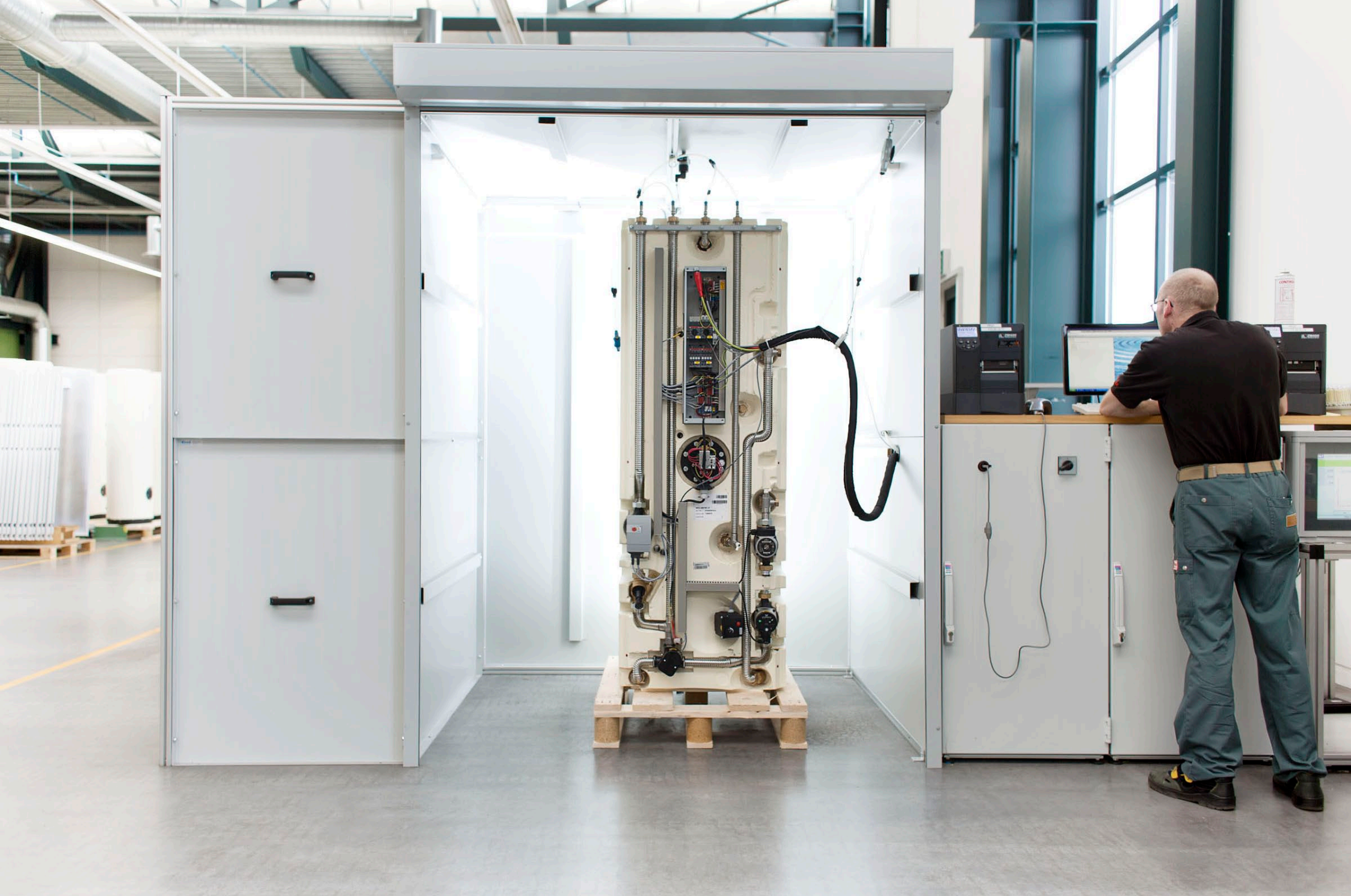






START Drehen		Not-Aus	Drehung STOP	Drehung SCHLECHT











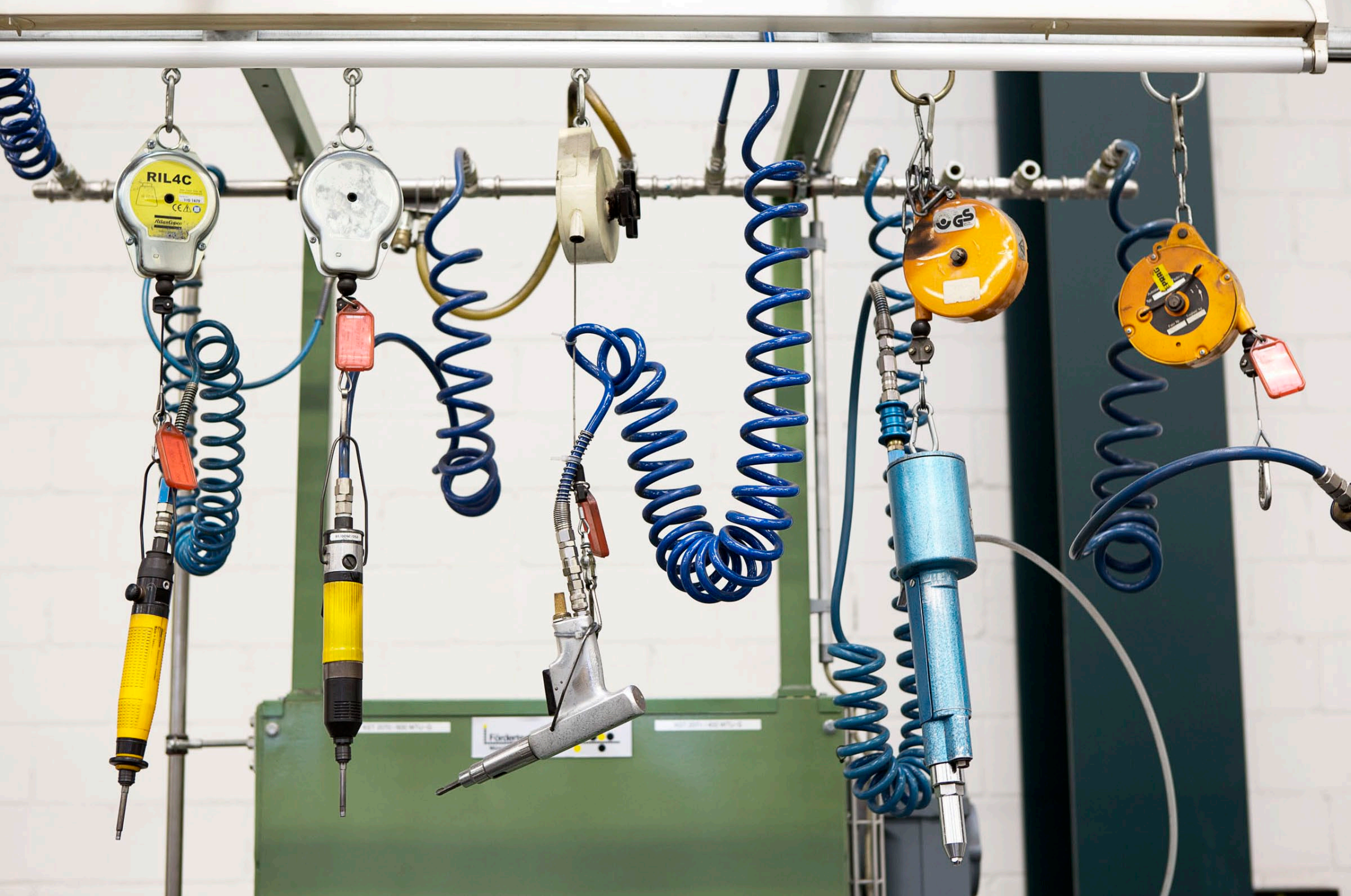












RIL4C
110 187V
CE

GS

5000



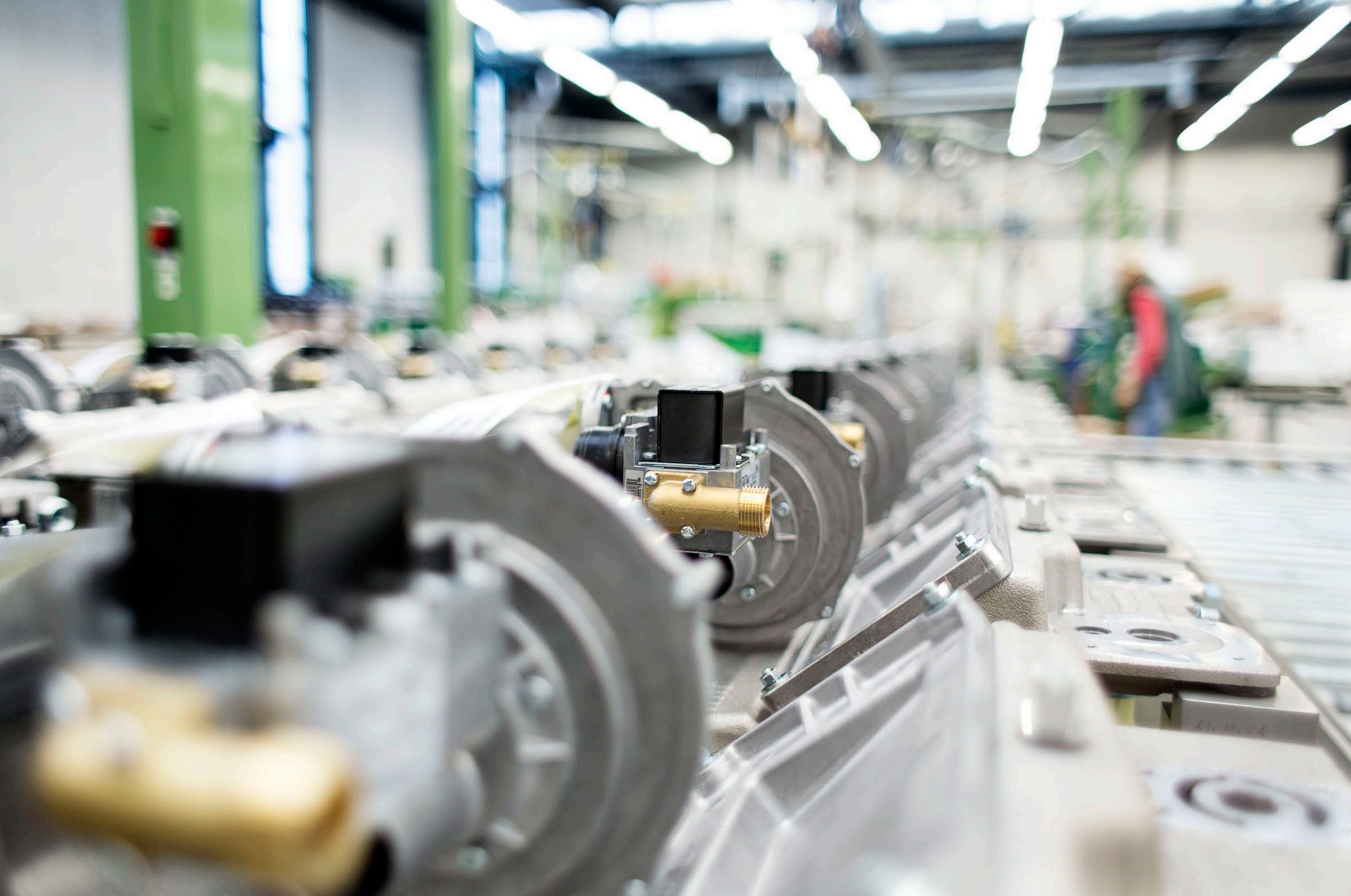
WCM-CPU V













-weishaupt-

MUMBAI

Dimensions (CM)

Length : 117
Width : 114
Height : 94

Weights (KGS)

Net : 125,00
Gross : 155,00

Order No. M1026/

MUMBAI
(INDIA)

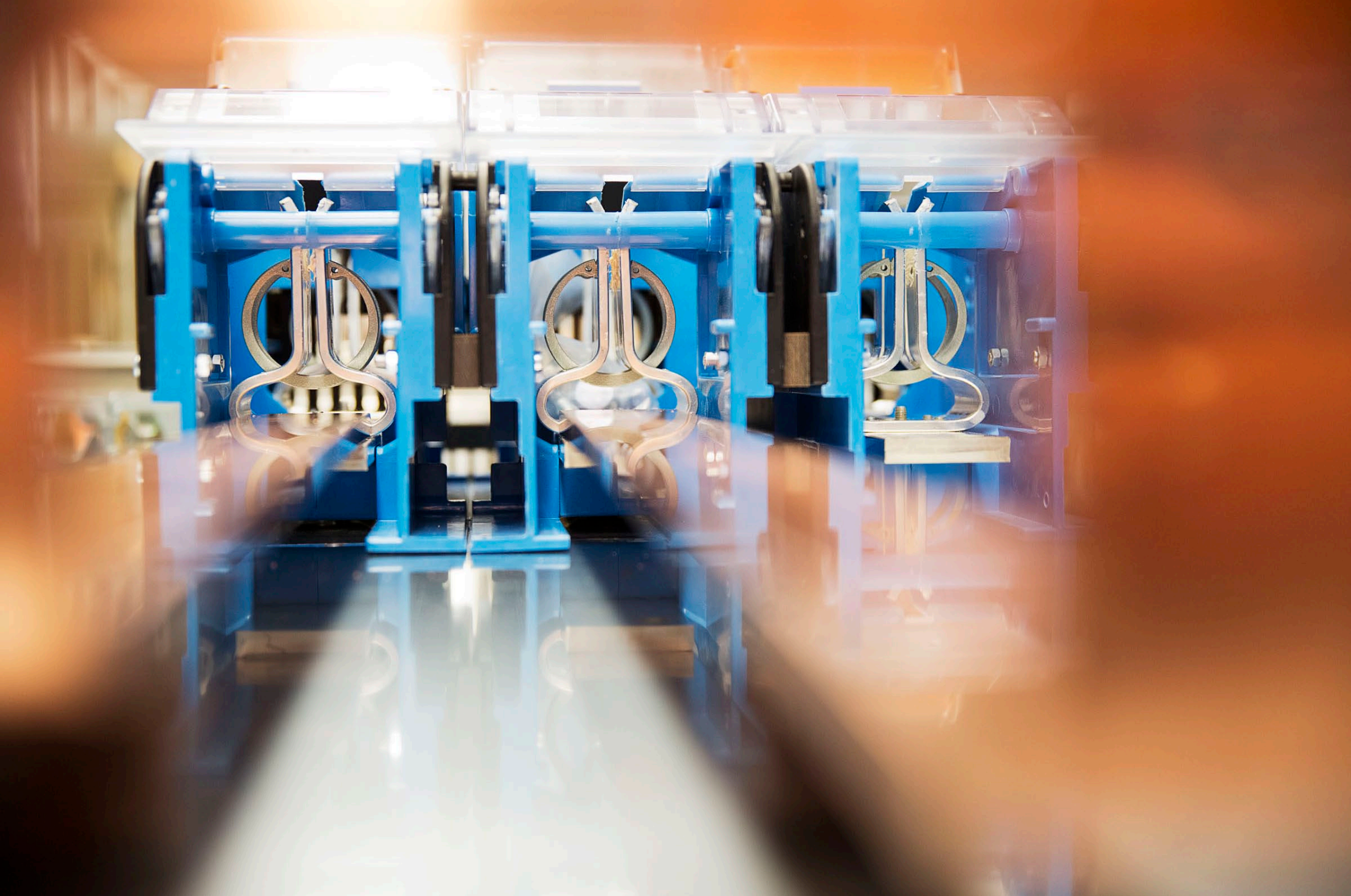


neuberger.
weishaupt gruppe









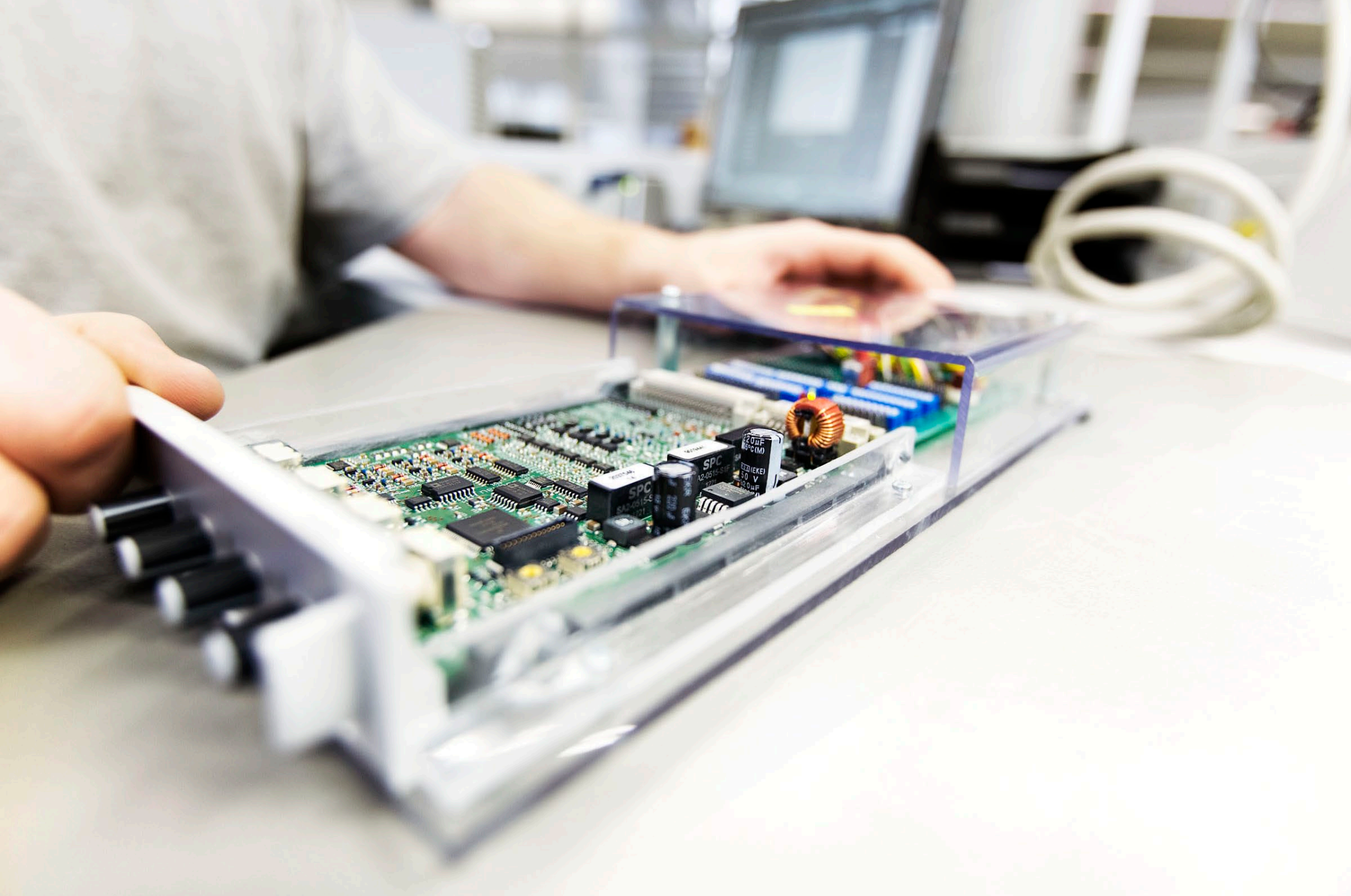
neuberger.

weishaupt gruppe

91541 Rothenburg o.d.Tbr.
Telefon: +49 (0) 9861 4020

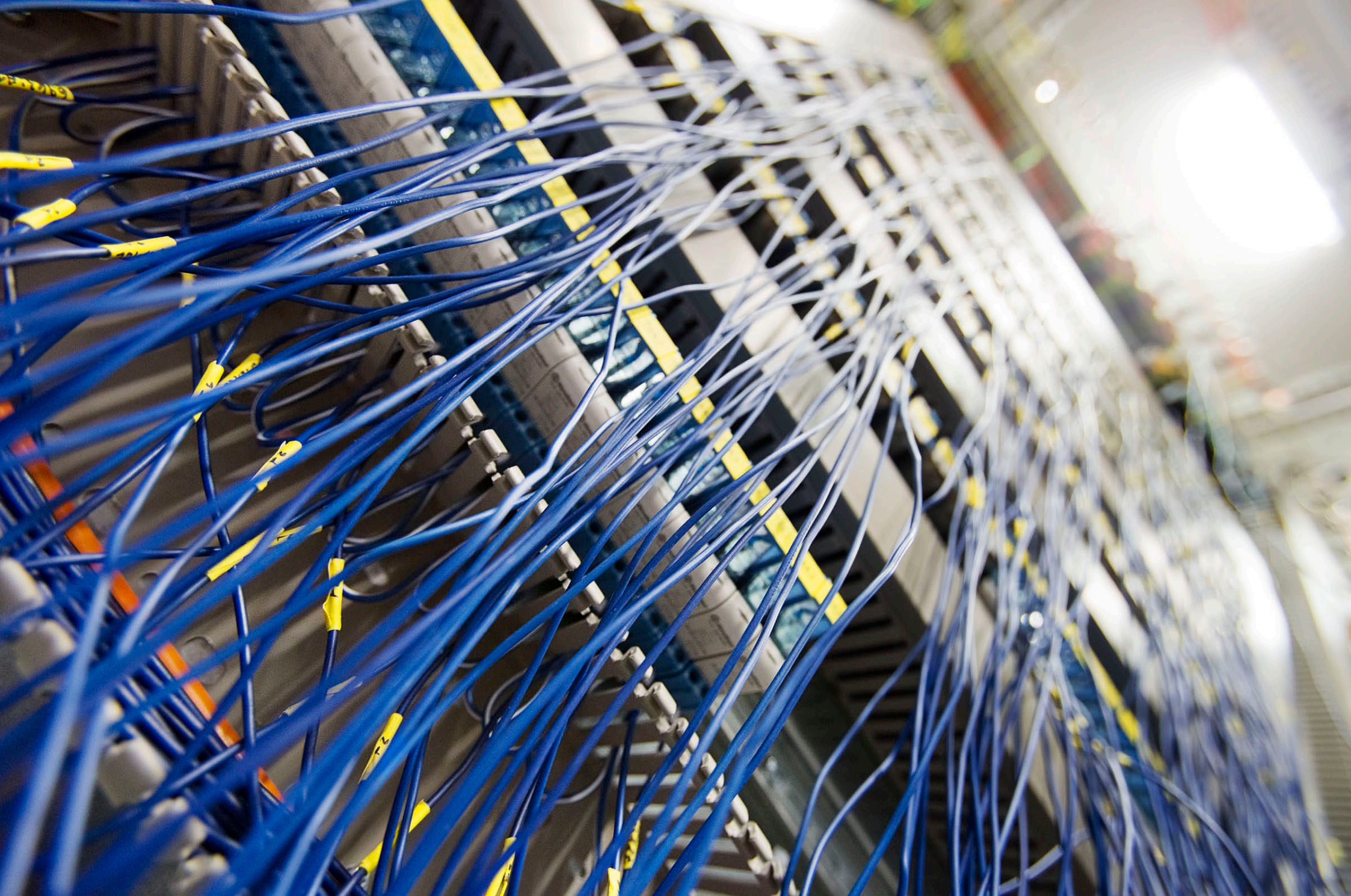
www.neuberger.net













TCR3271.UH602

TCR3271.UH100.XG601

TCR3271.UH502

TCR3271.UH100.XG202

TCR3271.UH100.XG601

TCR3271.UH100.XG202



KR

H



neuberger.
weishaupt gruppe

neuberger.
weishaupt gruppe

Neuberger Gebäudeautomation GmbH
Oberer Kaiserweg 6
91541 Rothenburg ob der Tauber
Telefon: 09861/402-0
Telefax: 09861/402-444

25 168 P33



merit

RM 4XXX

PMC CP400

ALARM

QUIT

RELIABLE

LED TEST

30-CAPI

ARMOR 1

ARMOR 2

ARMOR 3

ARMOR 4

neuberg

neuberg

neuberg

neuberg

neuberg

neuberg

neuberg

neuberg

neuberg

neuberg

neuberg

neuberg

neuberg

neuberg

neuberg

neuberg

neuberg

neuberg

neuberg

neuberg

neuberg

neuberg

neuberg

neuberg

neuberg

K507

K507

K507

K507

K507

K507

K507

K507

K507

K507

K507

K507

K507

K507

K507

K507

K507

K507

K507

K507

K507

K507

K507

K507

K507

Testmodul

Testmodul

Testmodul

Testmodul

Testmodul

Testmodul

Testmodul

Testmodul

Testmodul

Testmodul

Testmodul

Testmodul

Testmodul

Testmodul

Testmodul

Testmodul

Testmodul

Testmodul

Testmodul

Testmodul

Testmodul

Testmodul

Testmodul

Testmodul

Testmodul

ST 4100

ST 4100

ST 4100

ST 4100

ST 4100

ST 4100

ST 4100

ST 4100

ST 4100

ST 4100

ST 4100

ST 4100

ST 4100

ST 4100

ST 4100

ST 4100

ST 4100

ST 4100

ST 4100

ST 4100

ST 4100

ST 4100

ST 4100

ST 4100

ST 4100

744100

744100

744100

744100

744100

744100

744100

744100

744100

744100

744100

744100

744100

744100

744100

744100

744100

744100

744100

744100

744100

744100

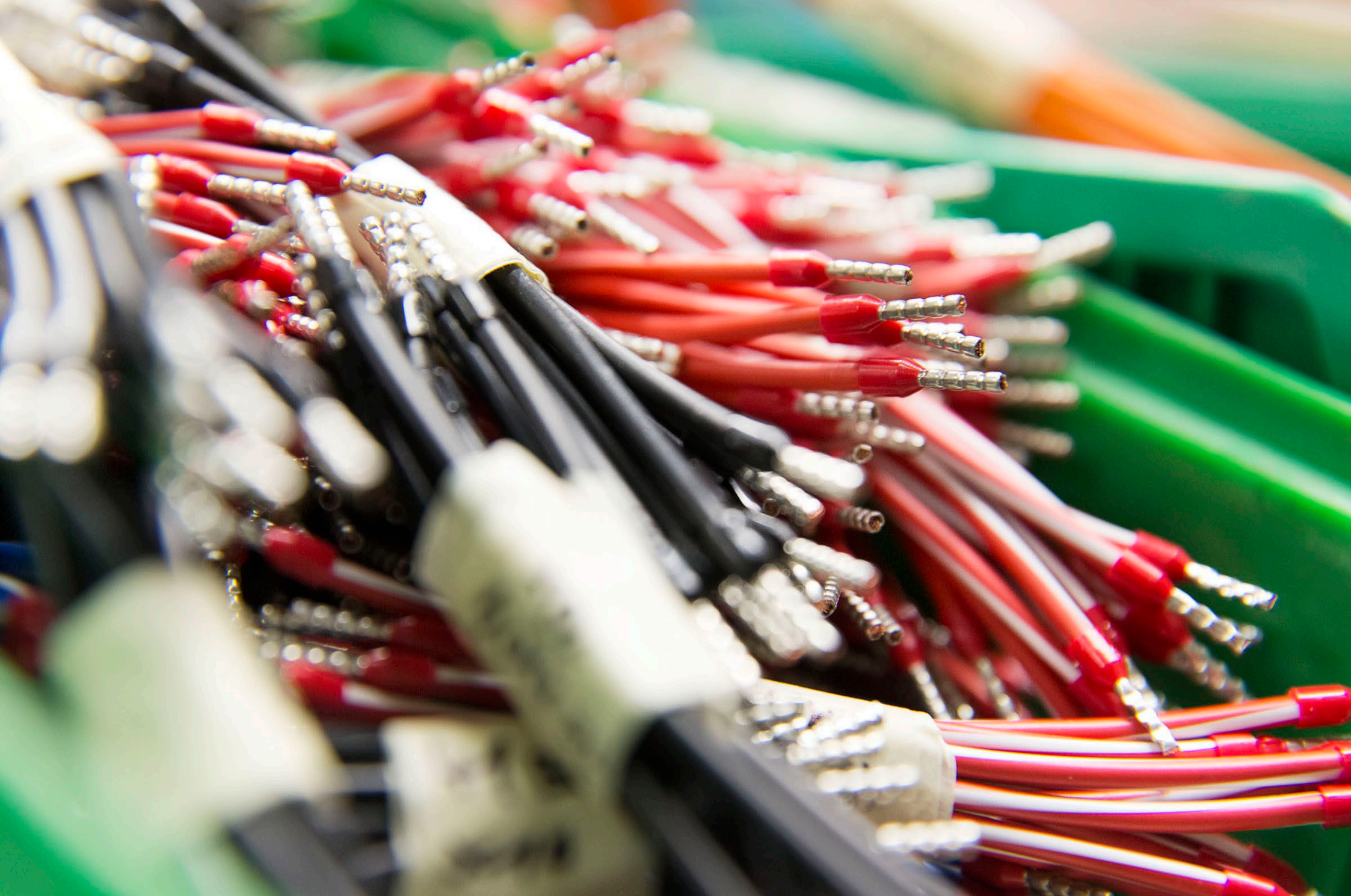
744100

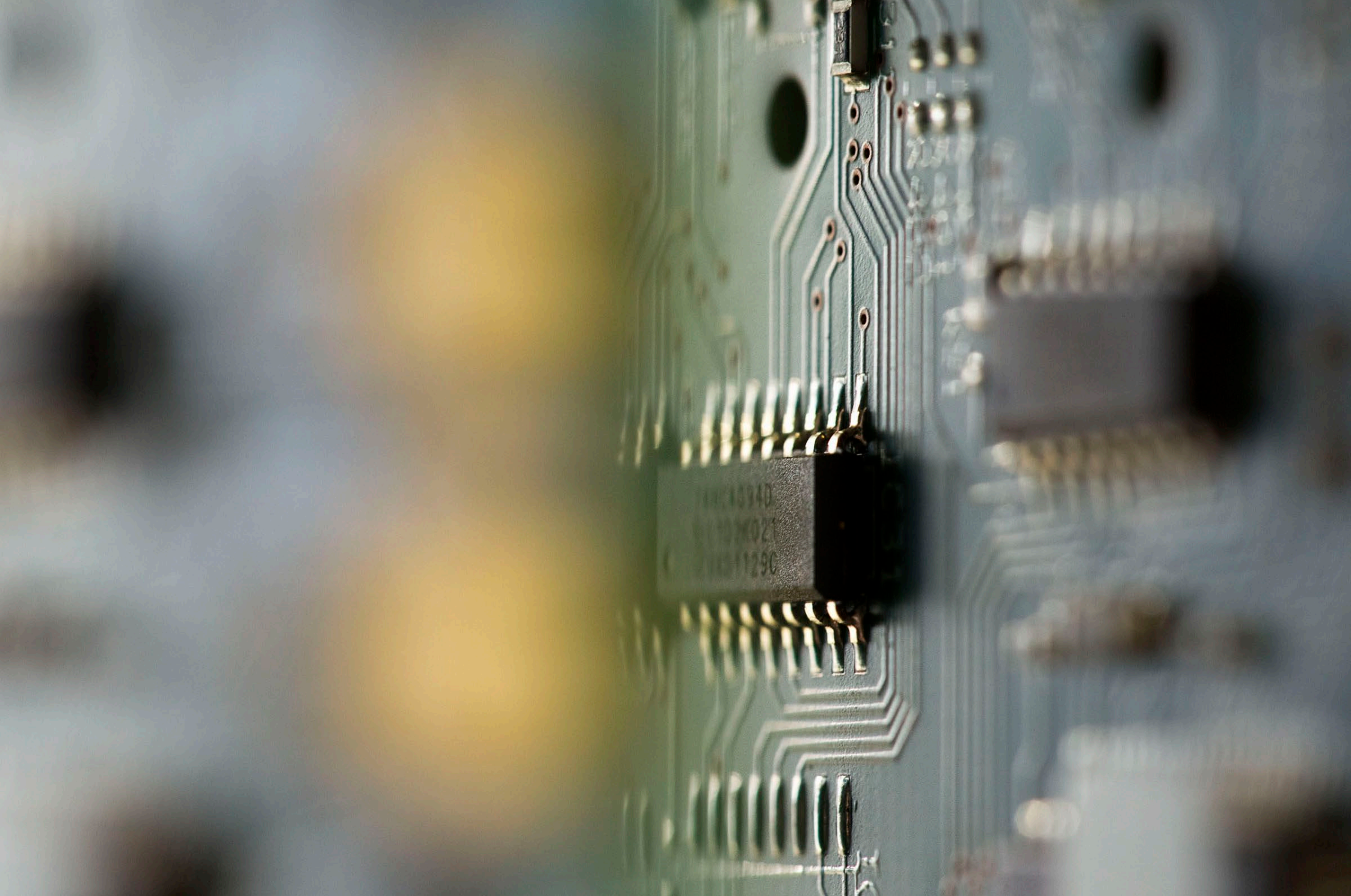
744100

744100



neuberger.







!!! VORSICHT HEB !!!



Megamat

Megamat

Megamat

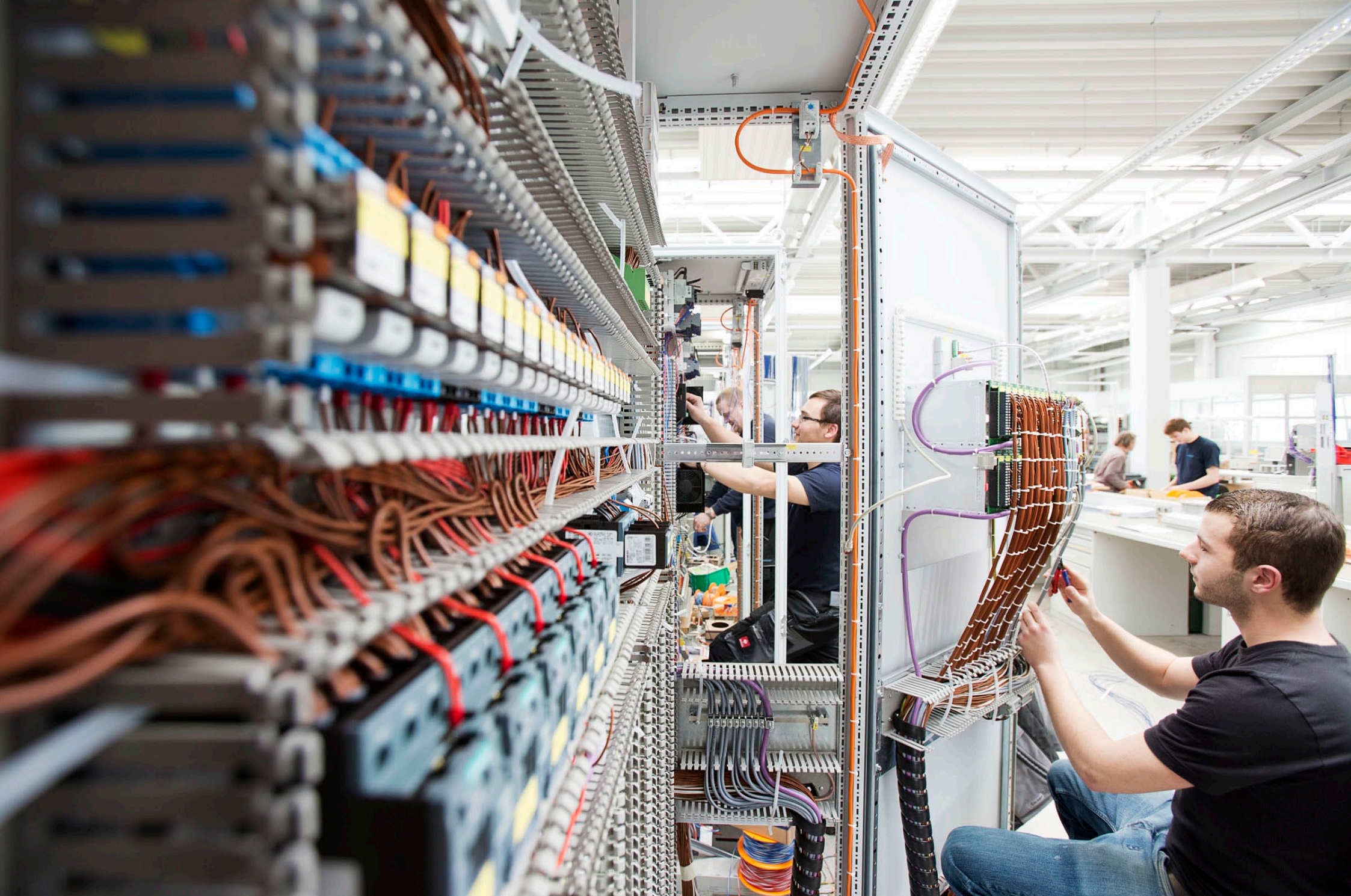
Megamat

neuburger

230V

230V

230V





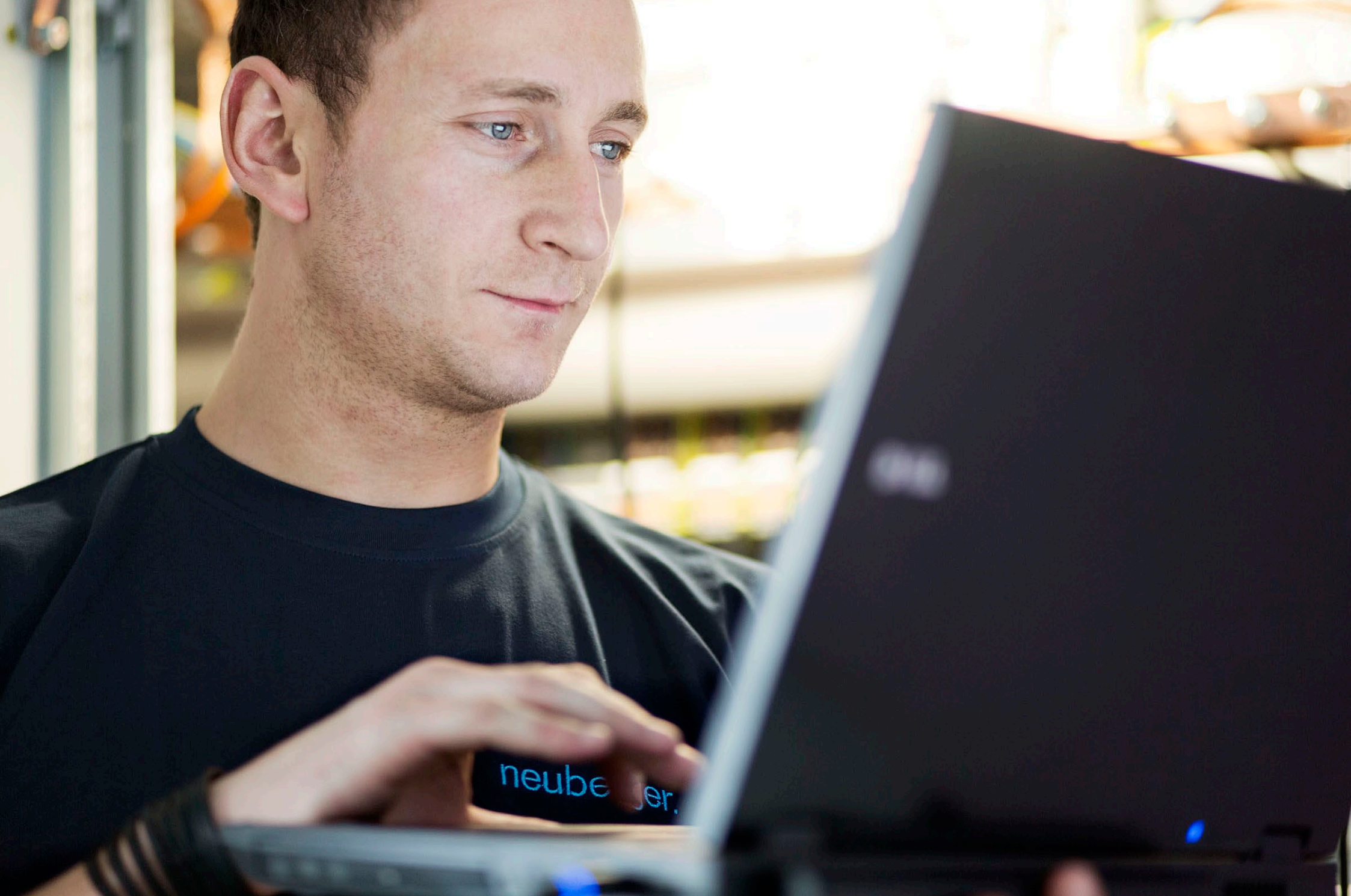
ACHTUNG
Bitte Türe
schließen

TCF-3016

Bitte Türe
schließen









neuberger.

4x20 VRE-W
Typ: VRE-W
19-22

Verteilkanal neu

bestehende Aussparungen
nutzen

Neuer Erhitzer für
Zone Flure 3.5kW

5

1175m³/h
Ø280

1675m³/h
Ø355
OKR=-1129 UKD

bestehende Aussparungen
nutzen

ZU-Drallauslass
Trox: VDW-Q-Z-H-M-L500x24
450m³/h

2

Zu Zone Nebenräume 975m³/h
OKR=-360 UKD

Zu Zone Nebenräume 1025m³/h
OKR=-450 UKD

OKR=-450 UKD

500/500

1175m³/h

1675m³/h

975m³/h

Ø315

Ø280

Ø250

Ø200

Ø125

Ø125

Ø125

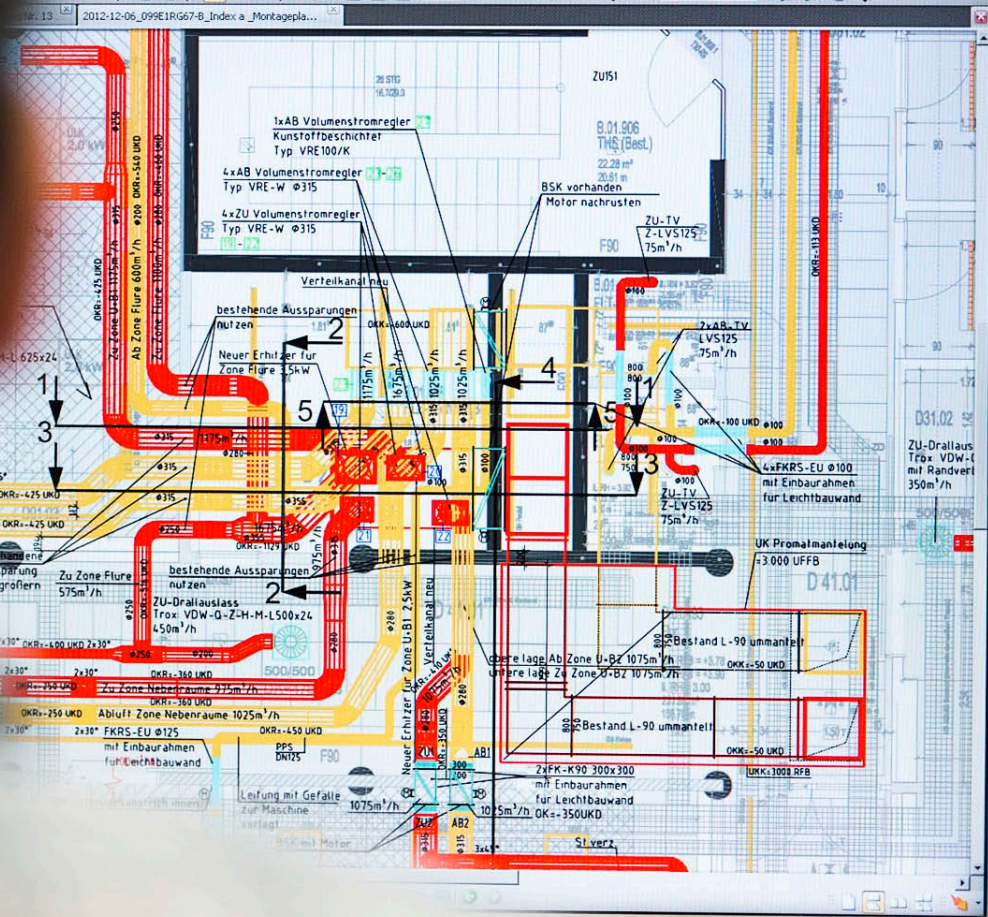
Ø125

Sicht über die Au...

08:23
14:06
47:42
42:46
42:34
03:39
03:08
58:01

Ers. f

[Auftragsda...



neuberger.

A0.13
LED16

E0.1
SW3

E0.0
SW1

E0.3
SW2

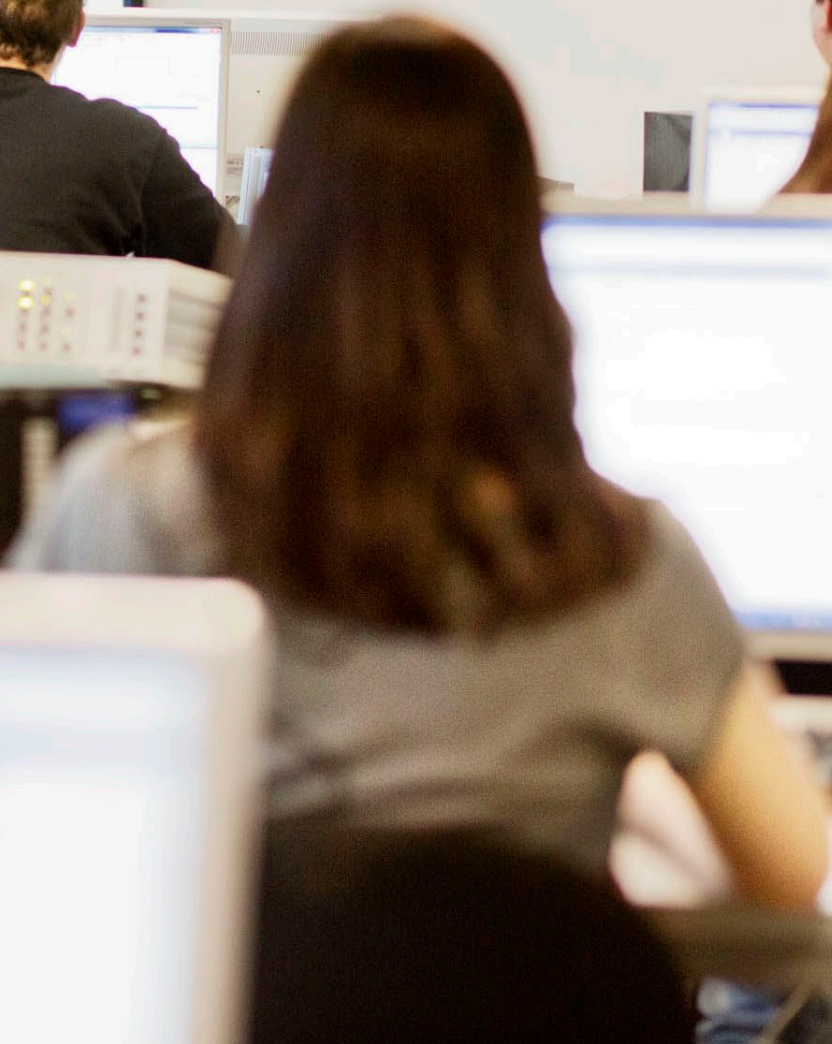
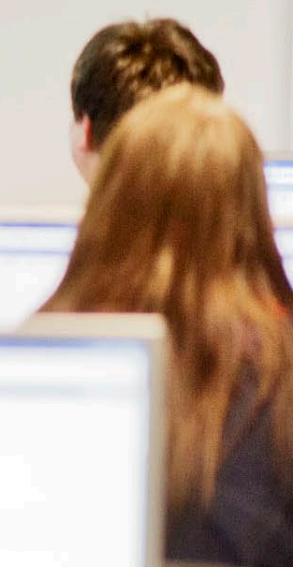
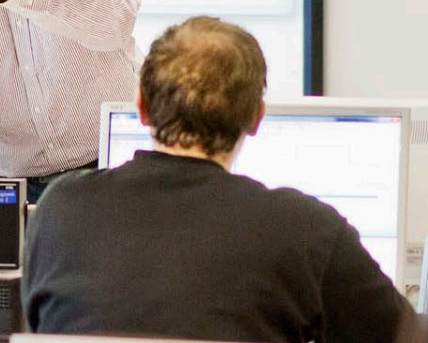
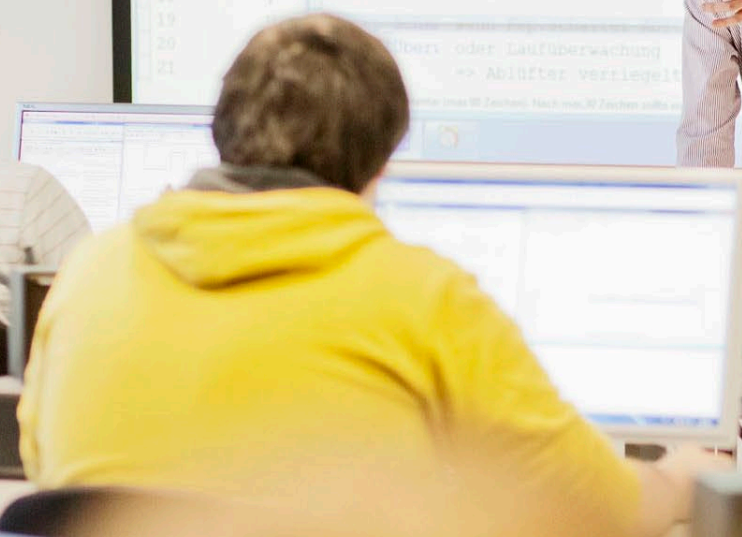
E0.2
SW4

AG 17 ON
LED ON

E0.9
SW4



























-weishaupt-

Wand 2/3

weishaupt

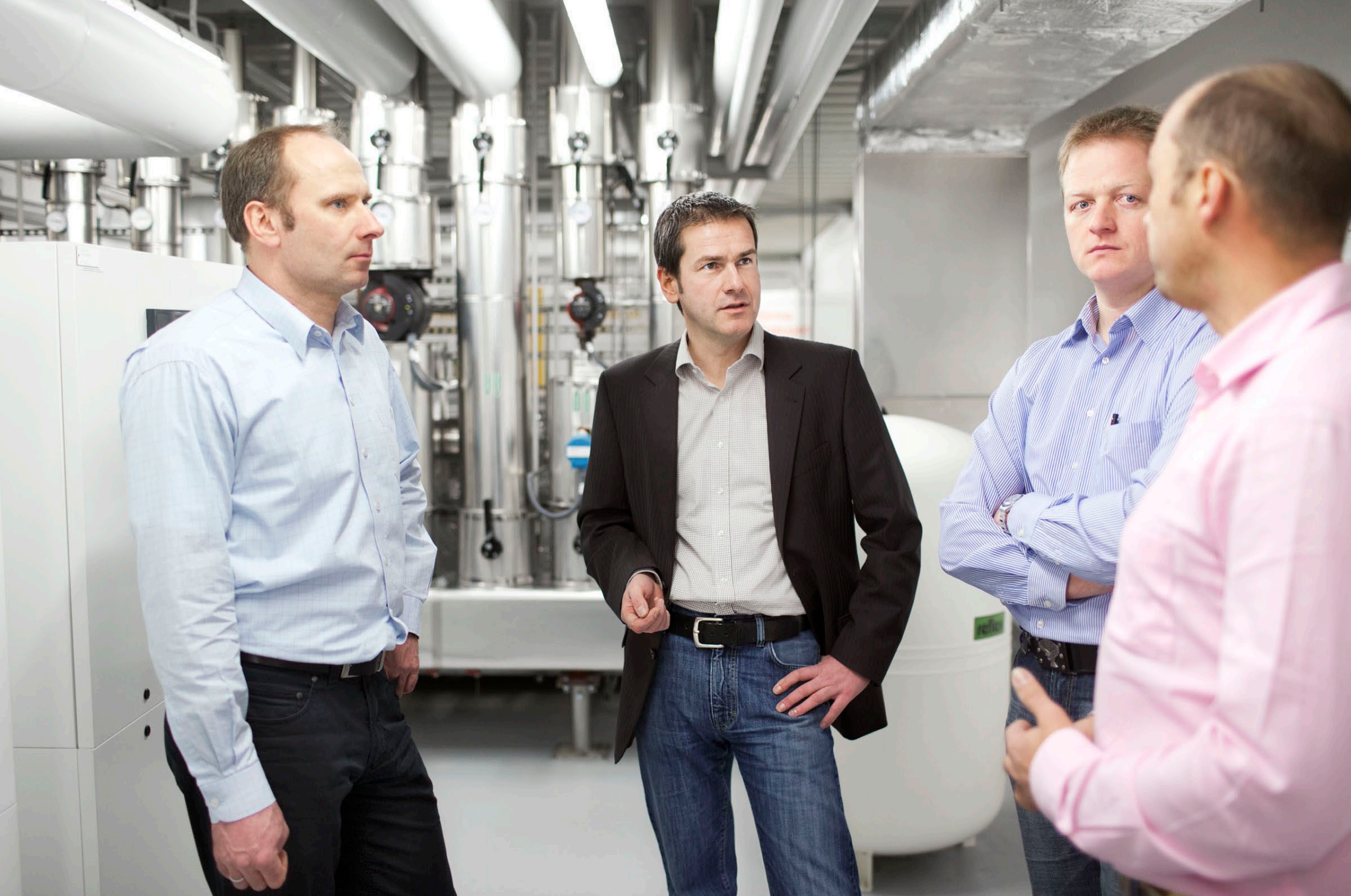
Temperatur M13

Temperatur M13









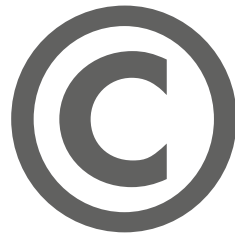












DOMINIK OBERTREIS FOTOREPORTER

ALLE FOTOS SIND URHEBERRECHTLICH GESCHÜTZT.
DIE VERWENDUNG DER FOTOS FÜR PRÄSENTATIONEN ODER LAYOUTS NUR MIT GENEHMIGUNG DES FOTOGRAFEN.